

JLH

Since 1983

FERROUS-TYPE HEAVY-DUTY FULLY AUTOMATIC CIRCULAR SAW

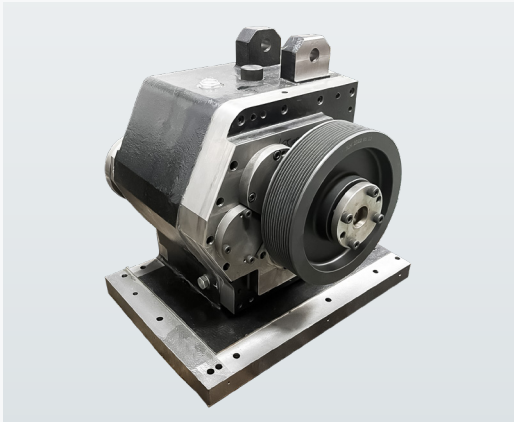
C-100PRO

TYPICAL APPLICATIONS

- Steel service centers
- Automotive component manufacturing
- Gear and shaft production
- General metal cutting operations



Innovating The Future of Sawing



Core Drive & Blade Stability System

The machine is equipped with a high-precision gearbox, independently developed and manufactured in-house, which serves as the core drive component of the circular saw.

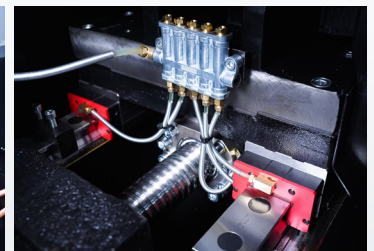
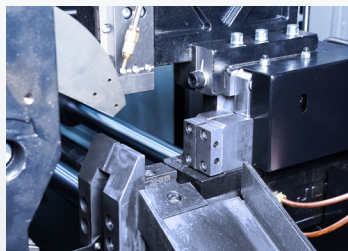
This ensures smooth operation, high transmission accuracy, and long-term durability under continuous industrial use.

Its integrated blade stabilization system significantly increases clamping rigidity, effectively suppressing blade vibration and lateral deflection during cutting.

As a result, blade life is substantially extended while cutting accuracy and surface quality are greatly improved.

Standard Features

- CE standard fully enclosed protection
- CE Electrical Safety
- Main drive permanent magnet motor
- HMI+Buttons
- Inverter
- Mistspray system (2L)
- Dust collection device
- Cutting pipe blast device
- Cabinet air conditioner
- LED working light
- Automatic chip conveyor (spiral)
- Vise pressure regulator
- Motorized chip brush
- Top clamp
- Hydraulic cooling fan
- Auto Lubrication device
- Simple Roller table
- 0.8M Servo Feed
- Sawdust collection Cart 70 (L)
- Tool box (wire brush, levelling pads)
- Circular Saw blade

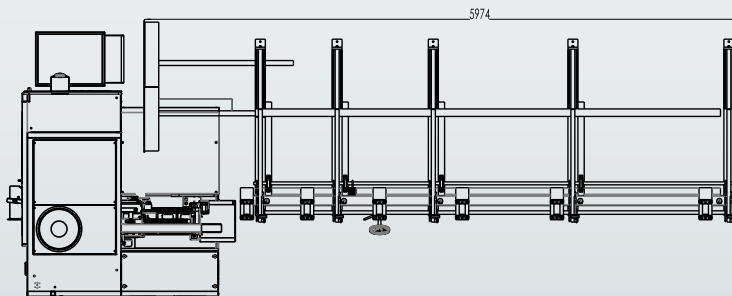
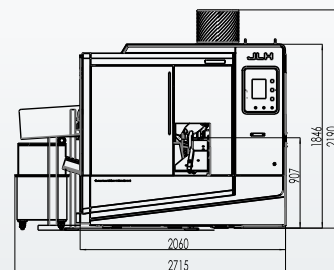
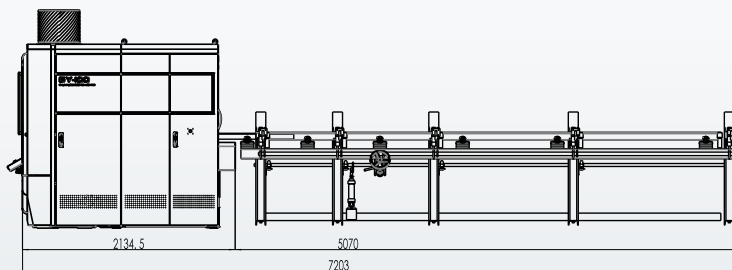


Optional Features

- JLH-EHA
- Saw Master
- UL Electrical Safety
- 1.5M power output material table
- 2M Servo Power output material table
- Third vise
- 5.5m inclined powered magazine (rectangular material)
- 5.5m inclined powered magazine (round material)
- 5.5m belt infeed magazine (round material)
- Transport underframe for containers

TECHNICAL DATA

	Item	Specification
Cutting Capacity	Cutting Capacity (Round)	Ø20 – Ø100 mm (Ø0.78 – Ø3.9 in)
	Cutting Capacity (Square)	20 – 70 mm (0.78 - 2.75 in)
	Minimum Cut-off Length	5 mm (0.20 in)
	Minimum Remnant Length (Automatic Mode)	65 mm + a (2.55 in + a)*
	Minimum Remnant Length (Single Cut)	30 mm + a (1.18 in + a)*
Machine Dimensions	Overall Length	2300 mm (90.6 in)
	Overall Width (incl. chip conveyor)	2260 mm (88.97 in)
	Overall Height	2210 mm (87 in)
	Material Support Height	925 mm (36.4 in)
	Machine Weight	≈ 3950 kg (8690 lb)
Drive System & Power Supply	Total Connected Load	26 kW (34.6 hp)
	Saw Blade Motor	18.5 kW (24.6 hp)
	Hydraulic Pump Motor	2.2 kW (3 hp)
	Power Supply	460 V / 60 Hz
Cutting Performance	Blade Speed	Infinitely variable, 30 – 160 rpm
	Saw Feed Speed	0.3 – 30 mm/s (0.011 – 1.20 in/s)
	Rapid Traverse Speed	150 mm/s (5.9 in/s)
Material Feeding	Automatic Feed Length (Single Stroke)	800 mm (31.49 in)
	Automatic Feed Length (Multiple Stroke)	Max. 9999 mm (393.66 in)
Saw Blade	Saw Blade Diameter	Ø360 mm (Ø14.17 in)
	Saw Blade Bore	Ø40 mm (Ø1.57 in)
	Saw Blade Thickness	2.25 × 2.6 mm (0.09 × 0.1 in)



JLH SAWS INTERNATIONAL INC.

Email: usa@jlhsaws.com

Please note that all specifications, dimensions, designs, and configurations provided above are subject to the final quotation and may be updated as part of our continuous product improvement and innovation.

www.jlhsaws.com