

JLH

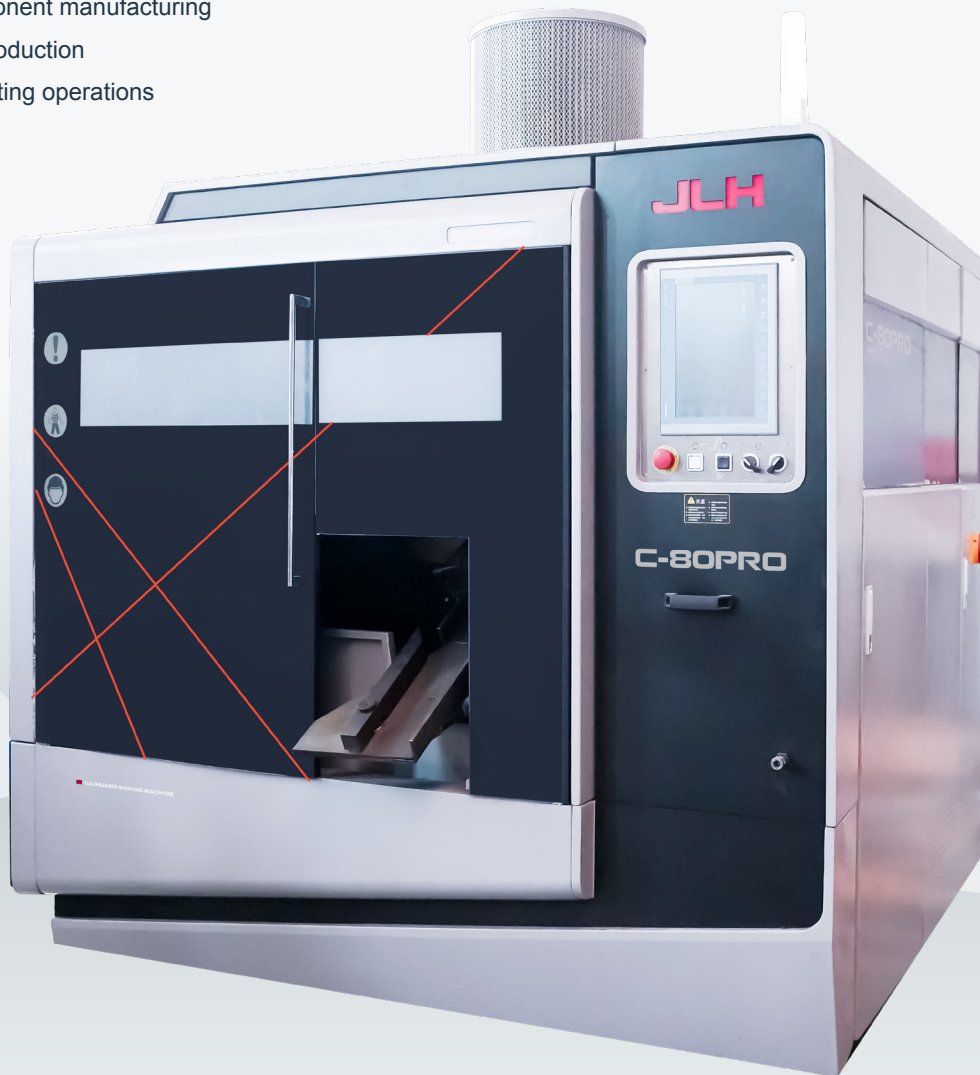
Since 1983

FERROUS-TYPE HEAVY-DUTY FULLY AUTOMATIC CIRCULAR SAW

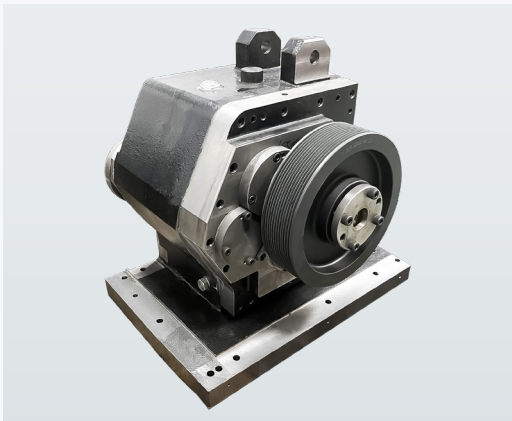
C-80PRO

TYPICAL APPLICATIONS

- Steel service centers
- Automotive component manufacturing
- Gear and shaft production
- General metal cutting operations



Innovating The Future of Sawing



Core Drive & Blade Stability System

The machine is equipped with a high-precision gearbox, independently developed and manufactured in-house, which serves as the core drive component of the circular saw.

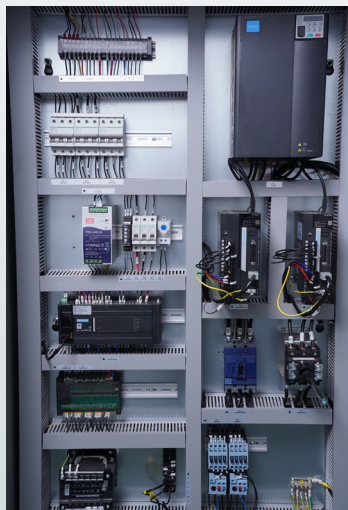
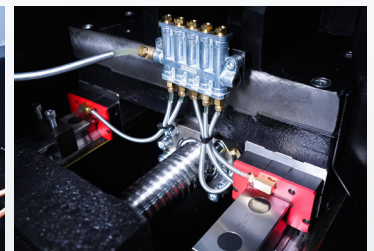
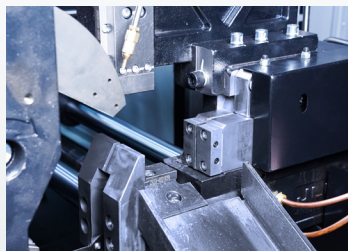
This ensures smooth operation, high transmission accuracy, and long-term durability under continuous industrial use.

Its integrated blade stabilization system significantly increases clamping rigidity, effectively suppressing blade vibration and lateral deflection during cutting.

As a result, blade life is substantially extended while cutting accuracy and surface quality are greatly improved.

Standard Features

- CE standard fully enclosed protection
- CE Electrical Safety
- Main drive permanent magnet motor
- HMI+Buttons
- Inverter
- Mistspray system (2L)
- Dust collection device
- Cutting pipe blast device
- Cabinet air conditioner
- LED working light
- Automatic chip conveyor (spiral)
- Vise pressure regulator
- Motorized chip brush
- Top clamp
- Hydraulic cooling fan
- Auto Lubrication device
- Simple Roller table
- 0.8M Servo Feed
- Sawdust collection Cart 70 (L)
- Tool box (wire brush, levelling pads)
- Circular Saw blade



Optional Features

- JLH-EHA
- Saw Master
- UL Electrical Safety
- 1.5M power output material table
- 2M Servo Power output material table
- Third vise
- 5.5m inclined powered magazine (rectangular material)
- 5.5m inclined powered magazine (round material)
- 5.5m belt infeed magazine (round material)
- Transport underframe for containers

TECHNICAL DATA

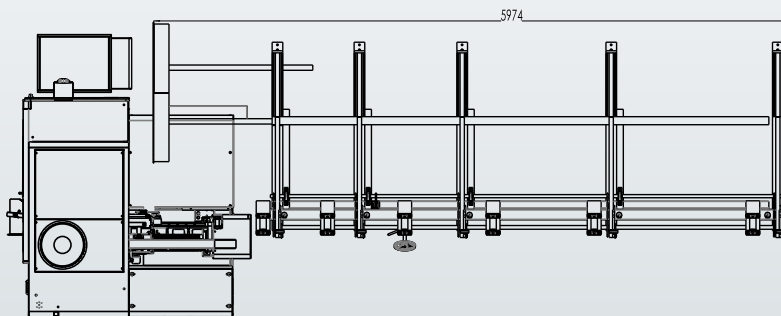
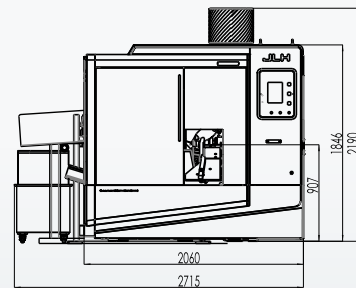
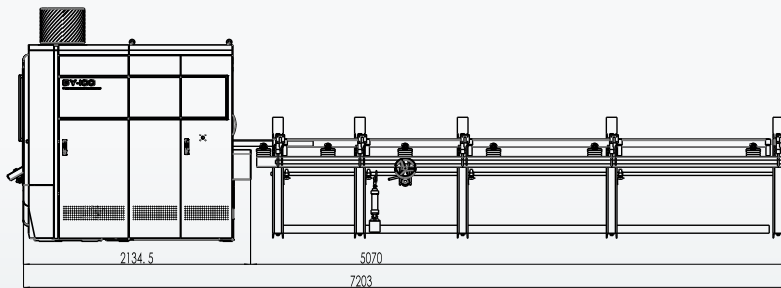
	Item	Specification
Cutting Capacity	Cutting Capacity (Round)	Ø10 – Ø80 mm (Ø0.39 – Ø3.15 in)
	Cutting Capacity (Square)	10 – 55 mm (0.39 × 2.17 in)
	Minimum Cut-off Length	5 mm (0.20 in)
	Minimum Remnant Length (Automatic Mode)	65 mm + a (2.55 in + a)*
	Minimum Remnant Length (Single Cut)	65 mm + a (2.55 in + a)*
Machine Dimensions	Overall Length	2300 mm (90.6 in)
	Overall Width (incl. chip conveyor)	2200 mm (86.6 in)
	Overall Height	2200 mm (86.6 in)
	Material Support Height	925 mm (36.4 in)
	Machine Weight	Approx. 3250 kg (7150 lb)
Drive System & Power Supply	Total Connected Load	24.5 kW (32.6 hp)
	Saw Blade Motor	11 kW (14.6 hp)
	Hydraulic Pump Motor	2.2 kW (3 hp)
	Power Supply	460 V / 60 Hz
Cutting Performance	Blade Speed	Infinitely variable, 30 – 160 rpm
	Saw Feed Speed	0.3 – 30 mm/s (0.011 – 1.20 in/s)
	Rapid Traverse Speed	150 mm/s (5.9 in/s)
Material Feeding	Automatic Feed Length (Single Stroke)	800 mm (31.49 in)
	Automatic Feed Length (Multiple Stroke)	Max. 9999 mm (393.66 in)
Saw Blade	Saw Blade Diameter	Ø300 mm (Ø11.81 in)
	Saw Blade Bore	Ø32 mm (Ø1.26 in)
	Saw Blade Thickness	2.0 × 1.7 mm (0.08 × 0.067 in)

CUTTING PERFORMANCE EXAMPLE

Workpiece: $\text{Ø}60 \times 6000 \text{ mm}$ Material: 16MnCr5
 Cut Length: $\text{Ø}60 \times 80 \text{ mm}$

Item	Specification
Cutting Speed (Line Speed)	80 – 90 m/min
Feed per Tooth	0.04 – 0.05 mm
Cutting Feed Speed	3.5 – 4.5 mm/s
Cutting Time per Part	14 – 19 s
Total Cycle Time per Cut	17 – 22 s
Output per Hour	163 – 211 pcs
Output per Shift	1300 – 1688 pcs
Initial Cutting Area	15 – 20 m ²
Initial Output Quantity	5300 – 7070 pcs

*Actual performance may vary depending on material condition and tooling.



JLH SAWS INTERNATIONAL INC.

Request detailed technical data, configuration options or quotation

www.jlhsaws.com